

PC 153

R+Combles

128,79 m²

Tableau des Surfaces		
Etage	Nom	surface utile
Rez-de-chaussée		
	GARAGE	16,04
	ENTREE	5,81
	WC	1,68
	CELLIER	5,83
	PIECE DE VIE	44,50
		73,86 m²
1er Etage		
	PALIER	1,89
	SDB	9,67
	CHAMBRE 1	13,28
	CHAMBRE 2	16,69
	CHAMBRE 3	13,40
		54,93 m²
TOTAL		<u>128,79 m²</u>



GROUPE
BDL
Depuis 1989

PC 153

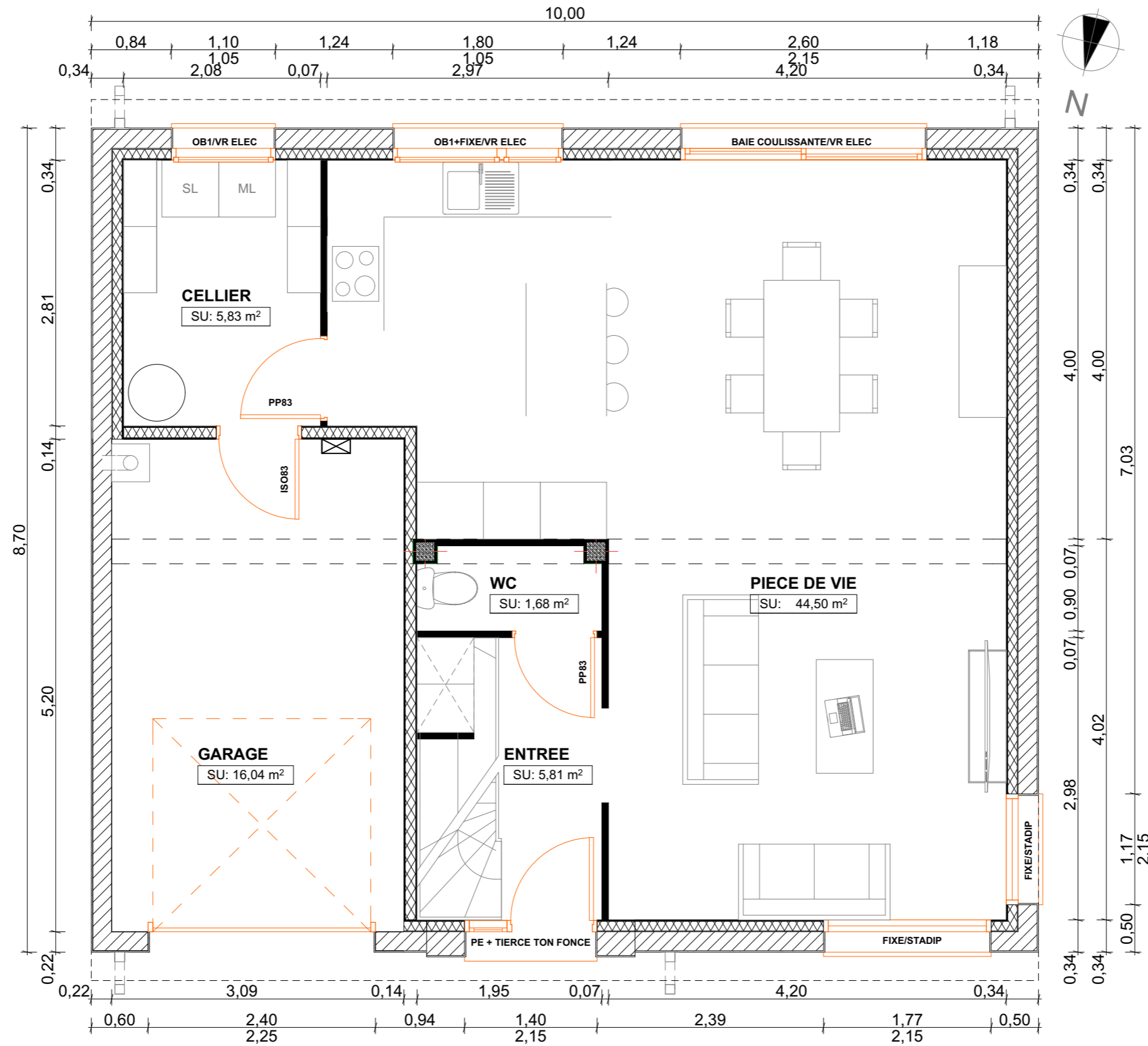
R+Combles

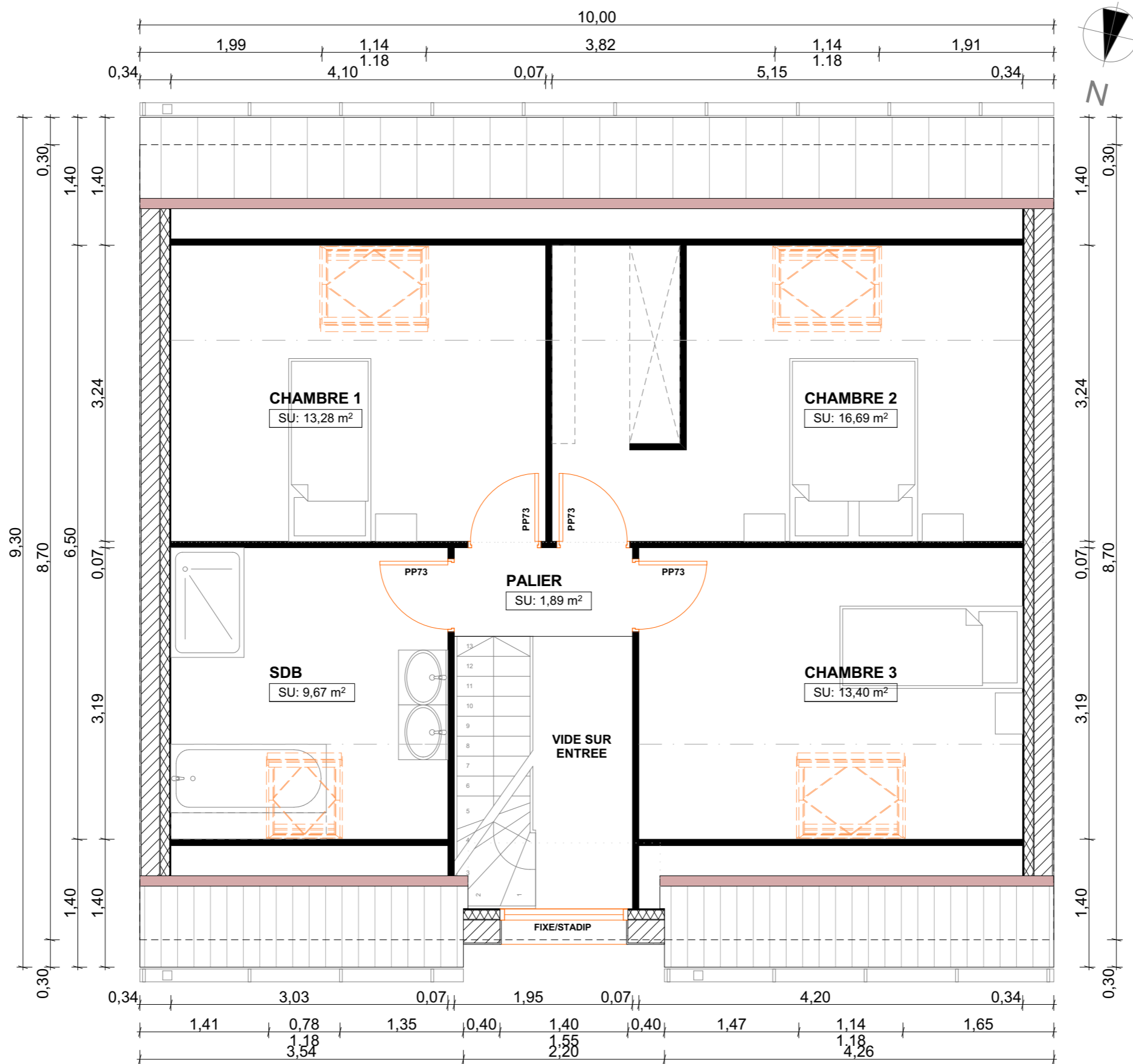
111,64 m²

Tableau des Surfaces		
Etage	Nom	surface utile
Rez-de-chaussée		
	GARAGE	16,04
	ENTREE	5,81
	WC	1,68
	CELLIER	5,83
	PIECE DE VIE	44,50
		73,86 m²
1er Etage		
	PALIER	1,89
	SDB	6,51
	CHAMBRE 1	9,02
	CHAMBRE 2	11,33
	CHAMBRE 3	9,03
		37,78 m²
TOTAL	Surfaces habitables	<u>111,64 m²</u>



GROUPE
BDL
Depuis 1989





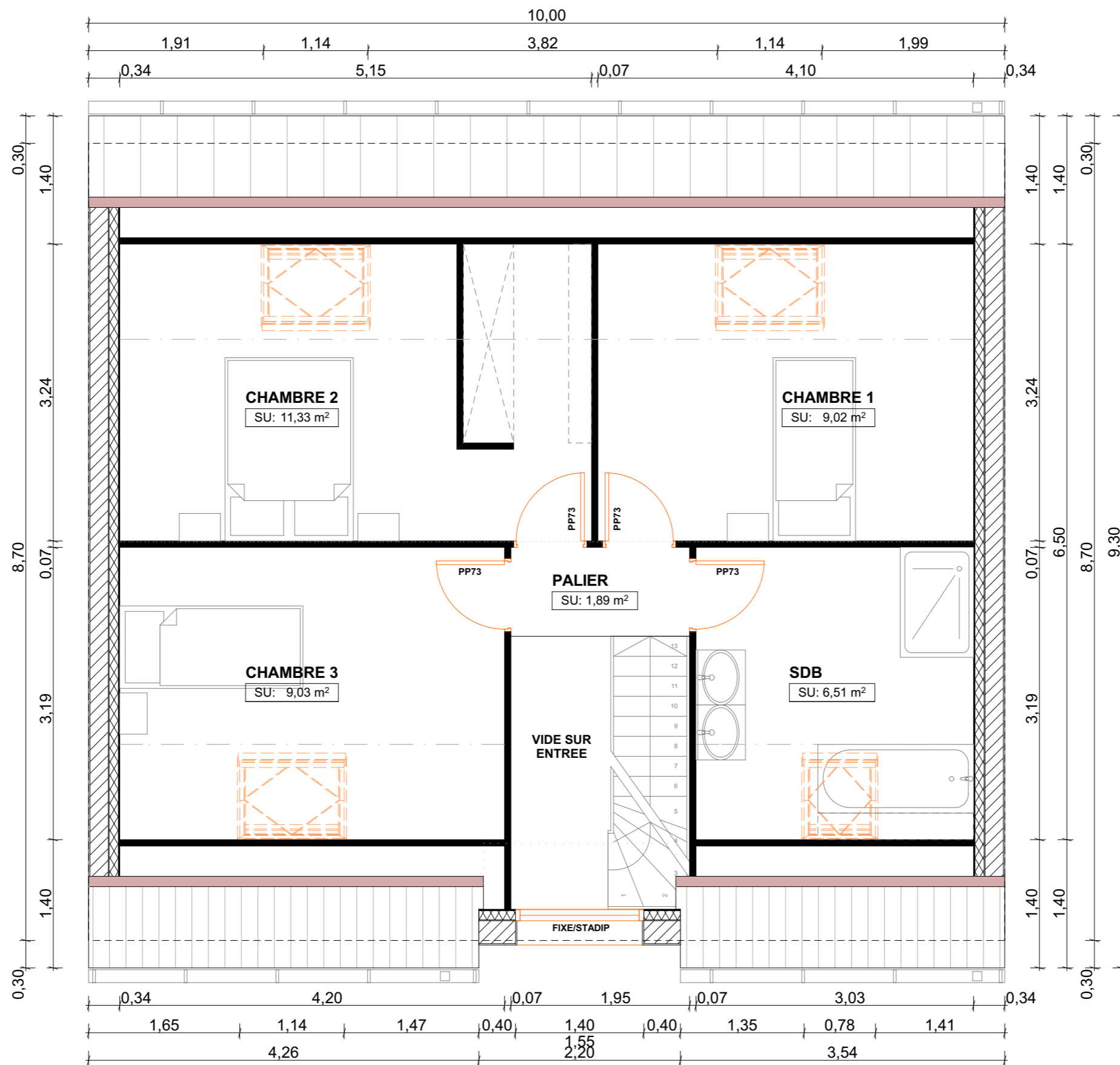
PC 153 - 128,79 m²

- 1:50

APS

ETAGE

APS



PC 153 - 111,64 m²

- 1:50

APS

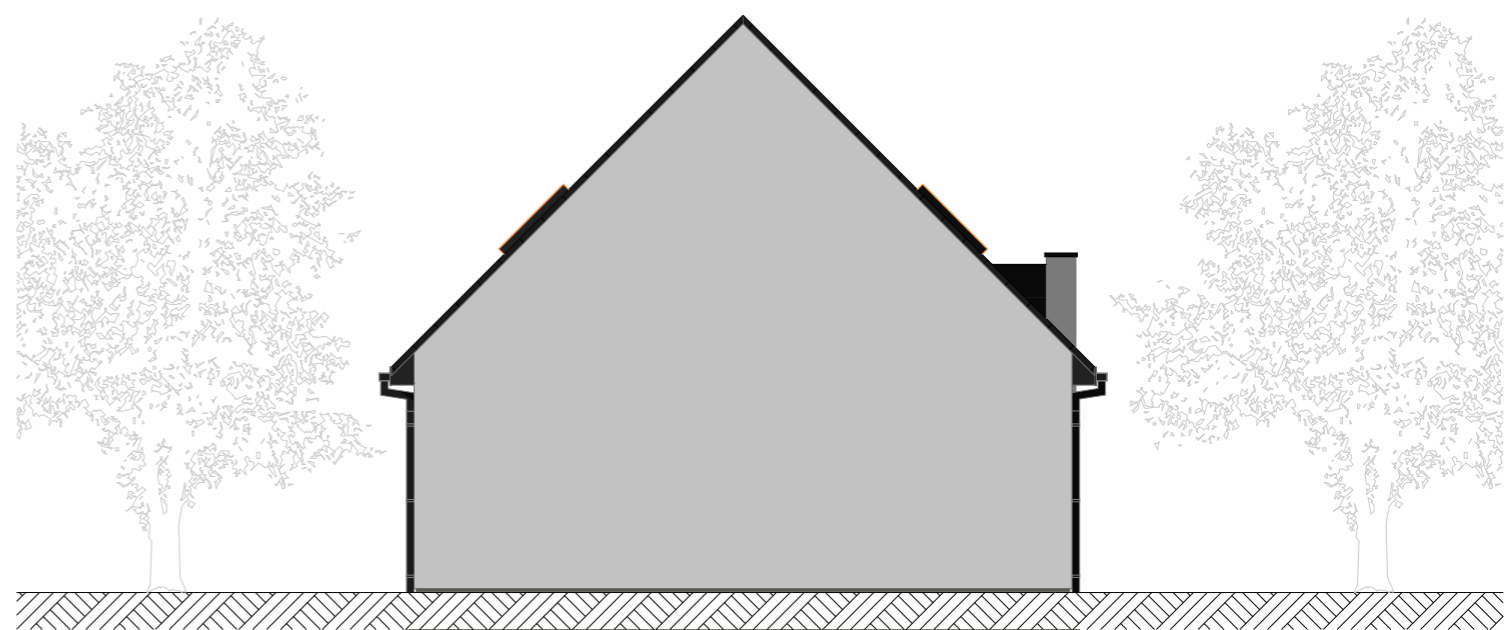
ETAGE

APS



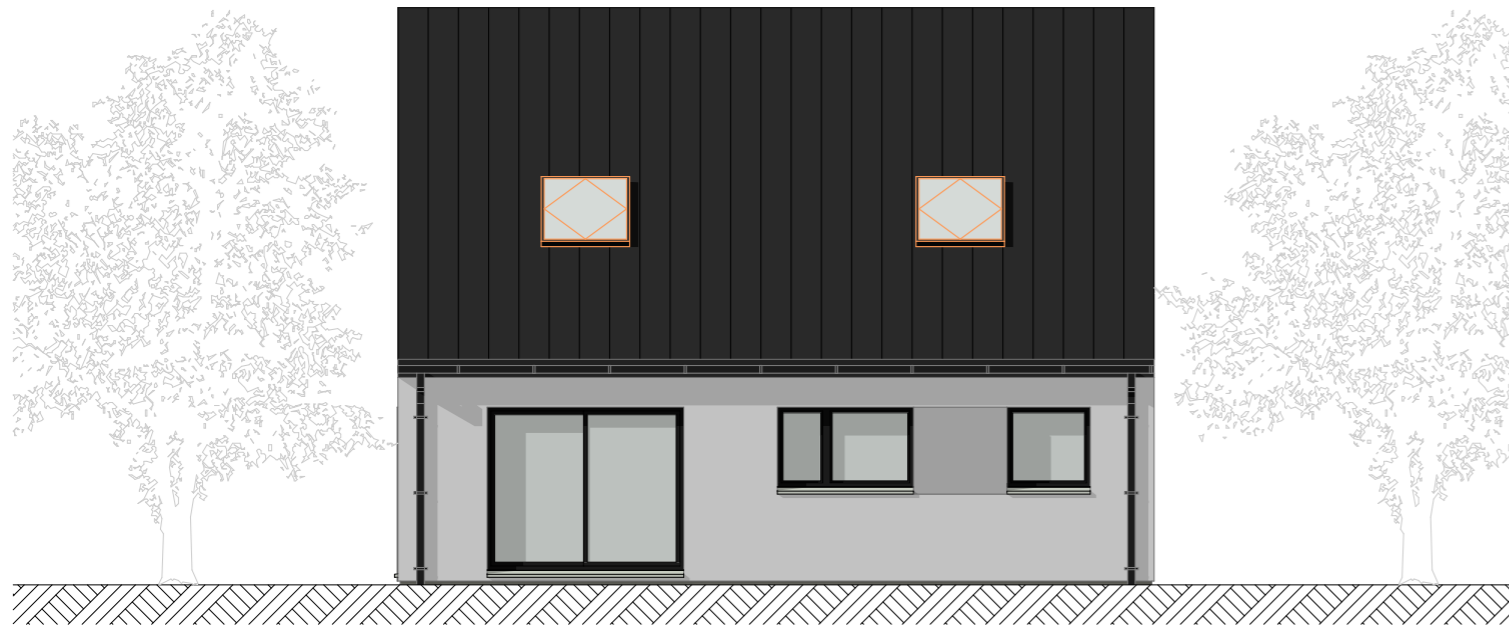
01
-

Façade Avant
1:100



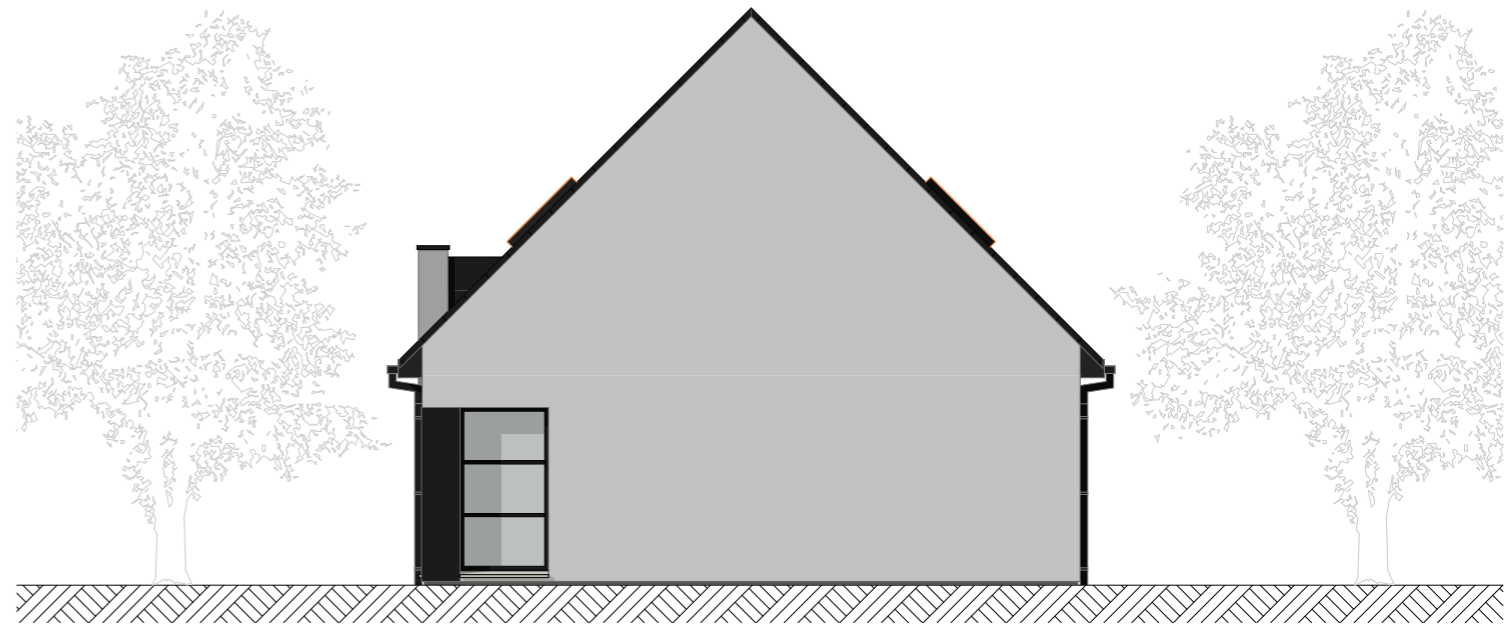
02
-

Façade Gauche
1:100



03
-

Façade Arrière
1:100



04
-

Façade Droite
1:100